



## First start-up

1. Fully charge the device battery using the power accessories.
2. Connect the battery to the device.
3. Insert a formatted micro SD card into the device.
4. Insert a SIM card with no PIN code and active 4G internet into the device.
5. Turn on the camera with the ON/OFF button - the blue LED light will be on.
6. Note: If the blue LED light does not turn on, hold down the Reset button.
7. Download the Ubox application.
8. Add the camera to the Ubox application.

**1.**



**2.**



## Device Description



## Setting up the infrared light

There are 3 possible options for setting up the IR illuminator.

### 1 The illuminator is set to automatic mode (the filter switches automatically)

The illuminator turns on automatically according to the current lighting conditions. When the illuminator is turned on, the filter automatically moves from the camera lens, which has an audible click in the camera.



**We recommend using this mode in places where you do not mind the sound effect (click) when the IR illuminator switches automatically.**

### 2 The IR filter is not placed in front of the camera lens.

Place the camera in a dark area so that the IR illuminator is activated and the IR filter is deactivated. Then press the filter switch button. Now the filter is still disabled and not placed in front of the camera lens. This prevents clicking when the light changes (darkening). The disadvantage is the reddish image when the IR illumination is turned off (in the light), when the filter is still deactivated.



**We recommend using this mode in places where it is still dark or in poor lighting conditions.**

### 3 The filter is still placed in front of the camera lens.

Place the camera in a bright environment so that the IR illuminator is deactivated and the IR radiation filter is activated. Then press the filter switch button. Now the filter is active and still placed in front of the camera lens. This prevents clicking when the light changes (darkening). The disadvantage is the low efficiency of the night mode.



**We recommend using this mode in rooms where there is constant light or darkness.**

## Package Contents

1. 4G UltraLife Camera in smoke sensor
2. USB power cable
3. USB power adapter
4. mini battery charger
5. 3M adhesive Velcro for quick assembly



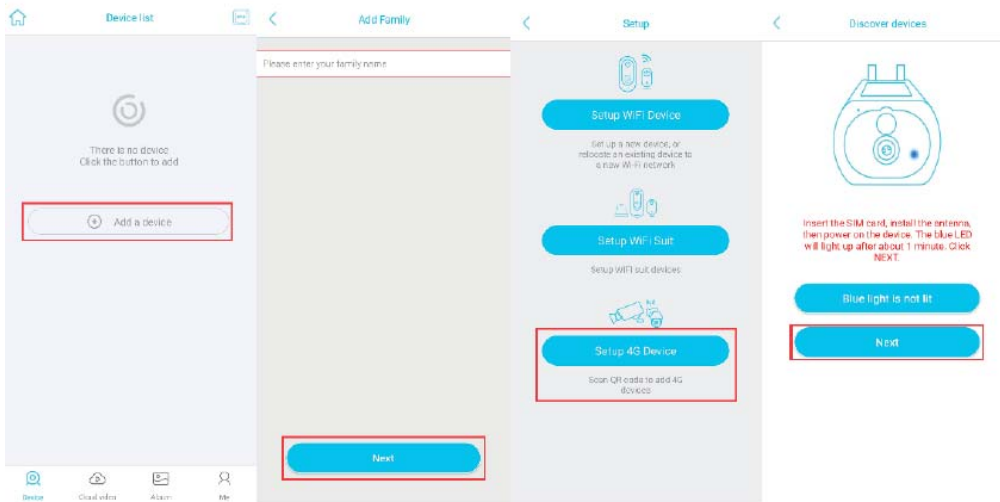
## Application used

**Ubox**

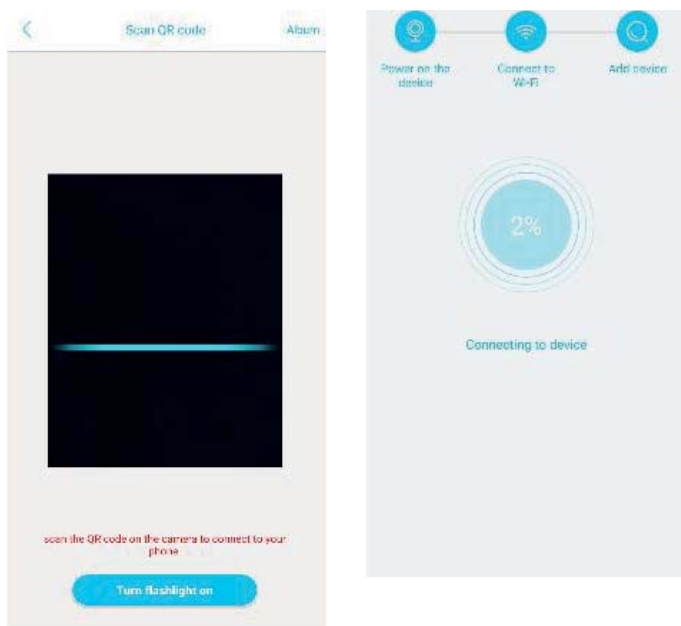


## Application Ubox

1. Download and install the application
2. Make a registration
3. Choose an option Add device → Set up 4G Device

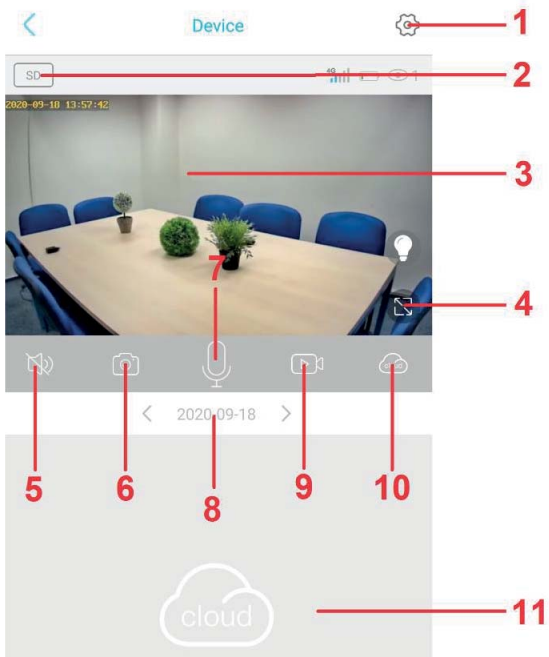


4. Scan the QR Code on the device



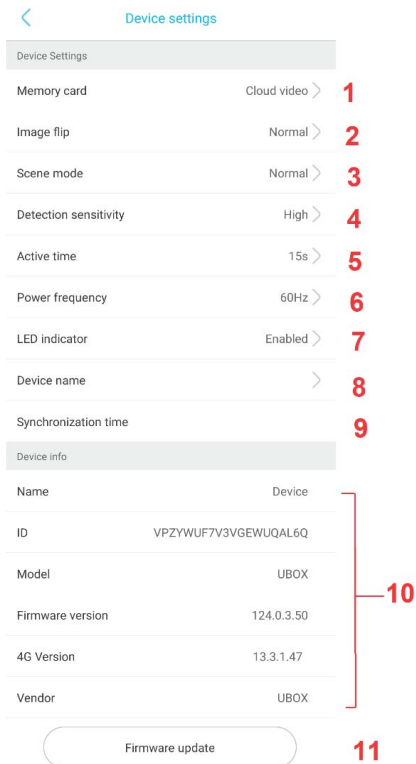
5. After a successful installation of the camera, you can take images, save videos and watch live stream from the unit itself. You can multiple devices to your account

## Application info



1. Settings
2. Video quality
3. Live preview
4. Full screen
5. Turn on / off the sound
6. Take a picture
7. Two-way communication
8. Day
9. Take a video recording
10. Switch between cloud or memory card storage
11. Reverse playback of recordings

## Detailed camera settings



1. Cloud cameras – Formatting, current memory status.
2. Image orientation
3. Ambient light conditions, night vision.
4. PIR motion detection sensitivity
5. Active time – 15s, 30s, 60s, always
6. Image frequency
7. Switching off/on the signaling diode in the front.
8. Basic settings – name.
9. Time synchronization.
10. Basic data about the device
11. In the case of a newer version of the firmware, it updates the existing one

## Notification setting

1. Click on basic camera settings.
2. Then select notification settings - Accept call.
3. Select the type of notification (call in - volat, notification – or notification message)

## Playback of recordings

1. Click on the live preview screen.
2. Choose cloud storage / memory card, when you tap the icon the storage settings is going to change.
3. Now you can play, download, or delete the recording from the list.

