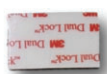




UltraLife series is designed for a long term surveillance usage. This module is equipped with low PIR sensor that allows you to monitor places with low activity movements for a long period of time. The module is placed manually to the covert PIR module, which makes it virtually unrecognizable from the real PIR module = sensor.

PACKAGE CONTAINS



- 1x Stronic UltraLife
- 1x Remote control
- 1x AV out Cable
- 1x Charging cable
- 1x USB Charger



QUICK SET-UP GUIDE:

- In order to change any settings like, time, date, type of recording or quality, you will have enter OSD menu, this has to be done via attached cable.
- It comes **standardly in PIR mode** detection preset and HD resolution
- To access **OSD menu** you have to connect **AV cable** (resolution, time, length of recordings)
- You also **need external display** to access the **OSD menu**
- By pressing PIR button you will enter STAND BY mode (you can make pictures etc. with remote)
- Battery charging can take up to 10 hours**

STEP 1

SETTING UP

- Place in SD Card ► Turn On ► MODULE IS IN PIR MODE
- You can deactivate the PIR Mode by pressing PIR button ► YOU WILL ENTER **STANDBY**

STEP 2

CONNECTING TO OSD MENU

- Connect with AV cable
- Press MENU and navigate through the menu with Remote. Press OK to confirm.

STEP 3

MOUNTING

- Place the camera in your designated spot, **charging battery can take up to 10 hours.**

DIODE SIGNALS

DIODE

- GREEN** light
- 1X FLASH **RED**
- GREEN** AND **RED** 3x Flashing
- YELLOW** 3sec + **GREEN** 2sec
- 3x FLASH **GREEN**
- 3x FLASH **RED**
- 3x **YELLOW**
- GREEN** FLASHING

FUNCTION

- Stand-by
- Taking picture
- Not charged / shutting down
- Turning on
- Continuous recording
- Recording in PIR activation (best battery)
- Motion Detection (worse battery)
- SD Card is not inserted

TIME SETTING

After you will the unit via supplied video cable, you will be able to change all the setting including date and time.



USEFUL INFORMATION

If battery is fully discharged, charging will start 3 min after connecting the device into power supply.

We recommend to format battery before you start using the device.

Charge the device at least 6hours and then let it discharged. Repeat three times. After device will be fully formatted, charge it for 5 hours, ideally.

Record a sample video, to test the device under various light conditions.

DISCLAIMER

This user manual can be slightly different from specific product.

Before start using the device, check with your local legal conditions. Neither supplier nor distributor assume responsibility for using device in conflict with local law.