

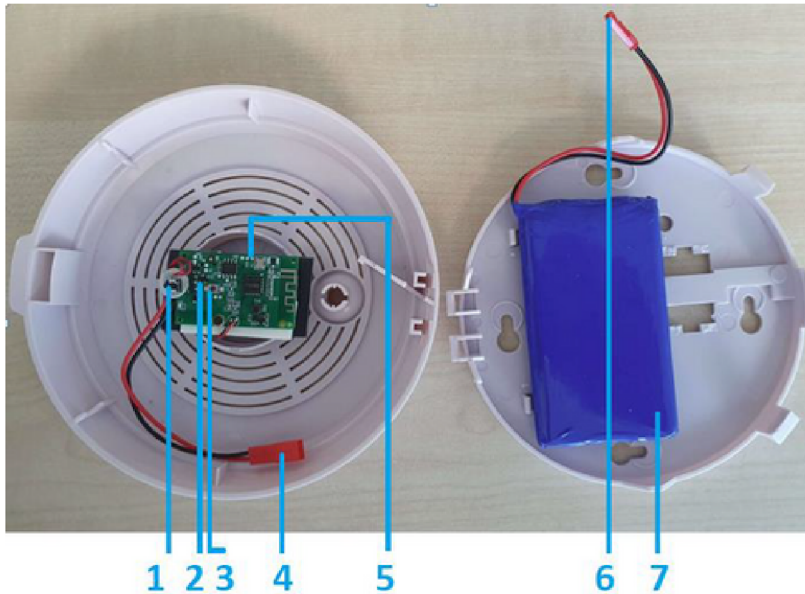
**Smoke Sensor Wi-Fi
Audio Recorder - (SECU68-SMOKE)****BATTERY 5 500mAh****Power Bank Wi-Fi
Audio Recorder - (SECU68-PB)****BATTERY 2 000mAh**

The Smoke Sensor, PowerBank and Extension Cord able to pick up sounds from its surroundings in perfect quality, record them, and transfer the recordings to your mobile phone. It has very simple set-up, the manual is same for all the Wi-Fi series in this section.

Extension Cord WiFi Audio Recorder - (SECU68-PWR)

The WiFi recorder hidden in the extension cord is virtually impossible to be recognized from a normal Extension Cord device.

DEVICE DESCRIPTION - Secu68-smoke



- 1 – Reset
- 2 – Signal LED (blue)
- 3 – Power button
- 4 – BEC 1 connector for connecting the battery to the device
- 5 – Micro SD card slot
- 6 – BEC 2 connector for connecting the battery to the device
- 7 – Battery

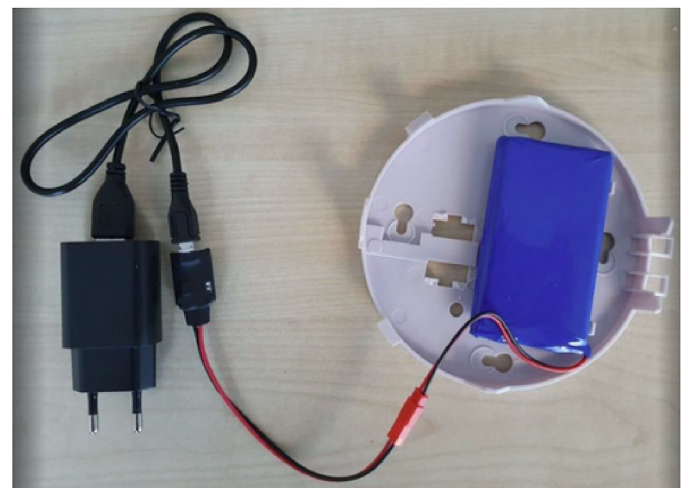
FIRST STARTUP

Charge the device's battery using the power accessory. During charging, the voltage converter's red signal LED lights up. Full charge is indicated by the blue LED lighting up.

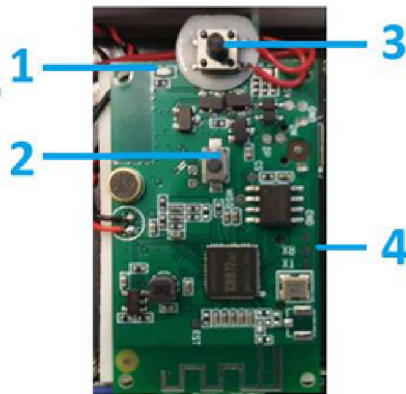
1. Connect the battery to the device.
2. **Insert SD card**
3. Place the device using the 3M tape or by screwing it to the desired location.
4. Turn on the device by holding down the Power button for a long time. When the blue LED lights up, release the button. The signal **LED will turn off**, and the device will be turned on.
5. **Briefly press the Power button** - the **LED flashes**, and the **device is in pairing mode**.
6. Pair the device with the „**CamSC**“ application.
7. Once the device is paired, it will stop flashing.

Turning Off

Turn off the device by holding down the Power button for a long time. When the LED starts flashing, release the button, and the listening device will turn off.



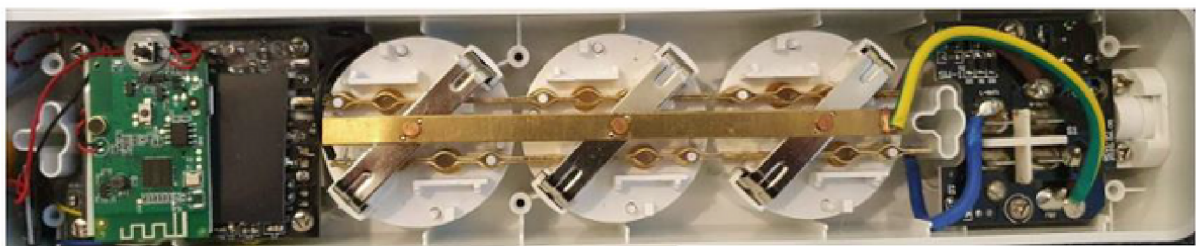
DEVICE DESCRIPTION - SECU68-PWR



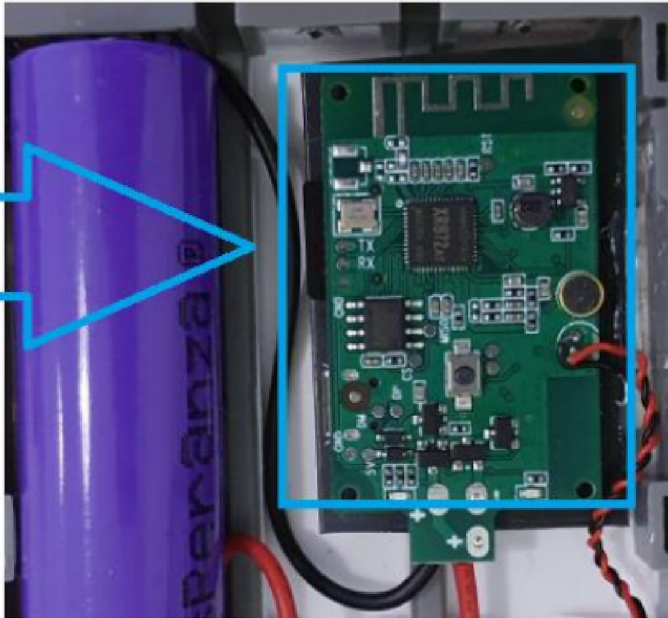
- 1 - Diode
- 2 - Power button
- 3 - Reset
- 4 - Micro SD card slot

FIRST STARTUP

1. Connect the device to a power outlet to charge the internal battery.
2. Disconnect the device from the power outlet, unscrew the back cover of the device and remove it. Note: Only enter the device if it is not plugged into a power outlet.
3. Turn on the device by pressing and holding the Power button. Once the blue LED lights up, release the button. The indicator LED will turn off and the device is turned on. **Briefly press the Power button** - the LED flashes and the device is in pairing mode.
4. Pair the device with the "CamSC" application.
5. Screw the back cover of the device back on and then connect it to a power outlet, and the device is powered directly from the outlet.
6. Turn off the device by pressing and holding the Power button. Once the LED starts flashing, release the button and the listening device will turn off.



DEVICE DESCRIPTION - Power Bank Secu68-PB



- 1 - Micro SD card
- 2 - Battery
- 3 - Power On/Off
- 4 - Signal diode
- 5 - Microphone

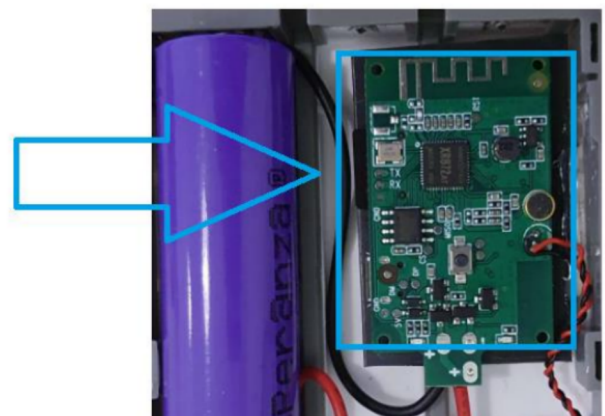
FIRST STARTUP

Charge the device's battery using the power accessory. During charging, the voltage converter's red signal LED lights up. Full charge is indicated by the blue LED lighting up.

1. Connect the battery to the device.
2. **Insert SD card**
3. Place the device using the 3M tape or by screwing it to the desired location.
4. Turn on the device by holding down the Power button for a long time. **When the blue LED lights up**, release the button. The signal **LED will turn off**, and the device will be turned on.
5. **Briefly press the Power button** - the LED flashes, and the **device is in pairing mode**.
6. Pair the device with the „CamSC“ application.

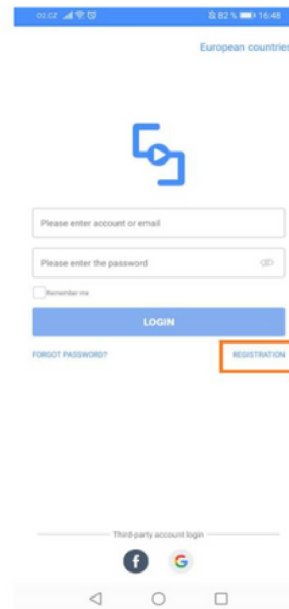
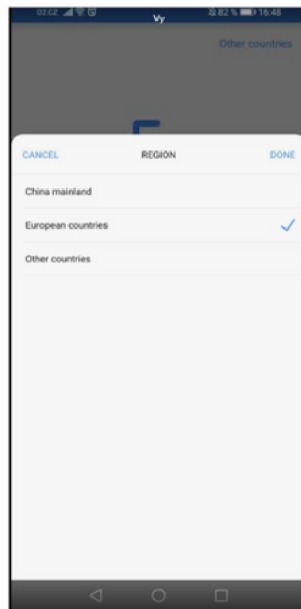
Turning Off

Turn off the device by holding down the Power button for a long time. When the LED starts flashing, release the button, and the listening device will turn off.



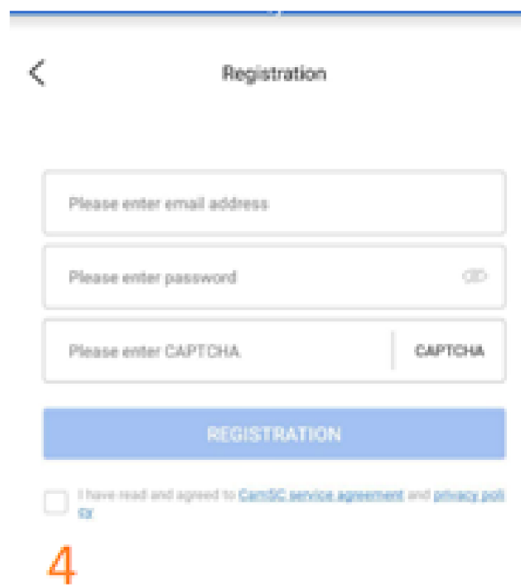
APPLICATION USAGE - CAMSC

a) Download and install the „CamSC“ application:
Apple APP store and Google Play.



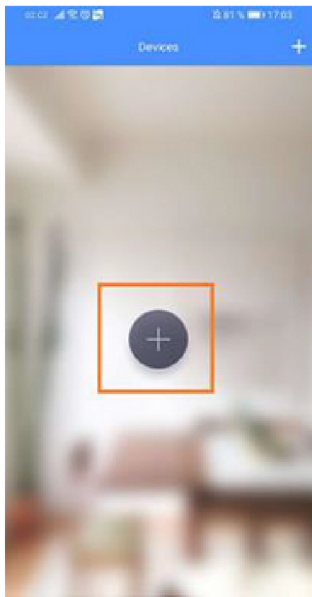
b) Register in the CamSC application.

1. Fill in your email
2. Choose a password
3. Within a minute, you will receive a verification code - Captcha - to your email. Fill in this code. -CHECK FOR SPAM
4. Check the confirmation
5. Click on „registration“



APPLICATION USAGE - CAMSC

c) To add a camera, click on the + icon (Add). Then select „Audio Recorder.“



e) Allow Bluetooth connection, location, and select the device from the list.



d) Put the device into pairing mode by holding down the Power button briefly. Pairing mode is indicated by the blue LED flashing. Now click on the „I see it in pairing mode“ icon.



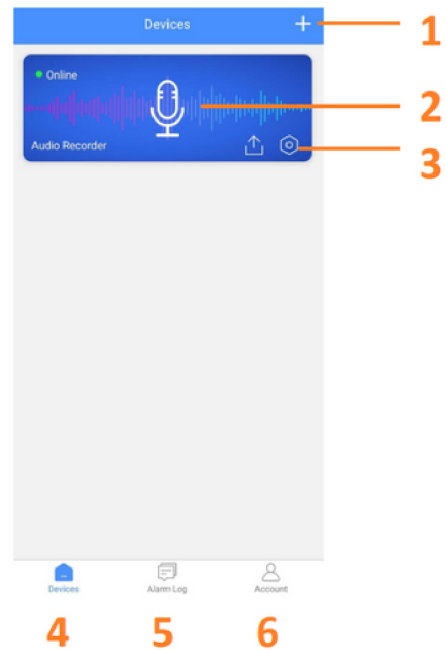
f) Select your home WiFi network, enter your password, and choose „Next.“ The device will then connect to your home WiFi network.



APPLICATION USAGE - CAMSC

g) The blue LED will stop flashing, and the device will be connected to the WiFi network.

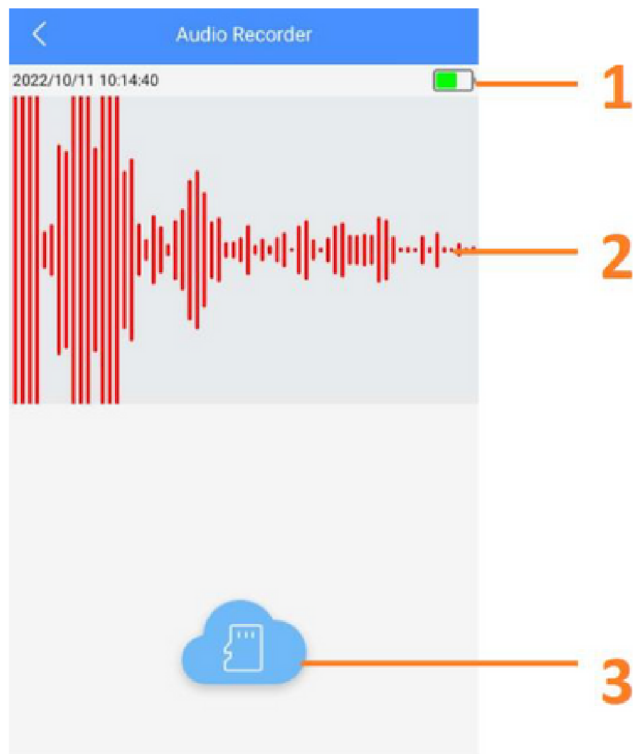
1. Add another device
2. Display online listening
3. Device settings
4. Device list
5. Alarm list



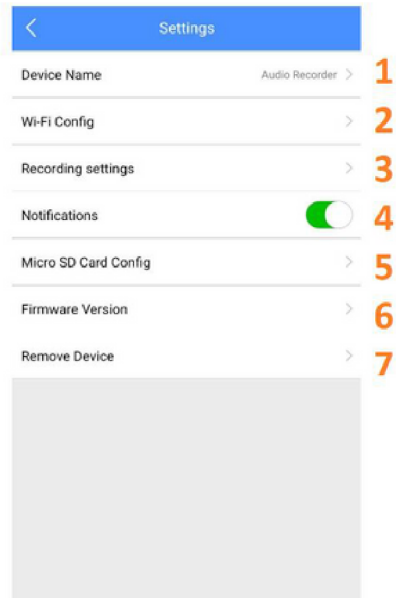
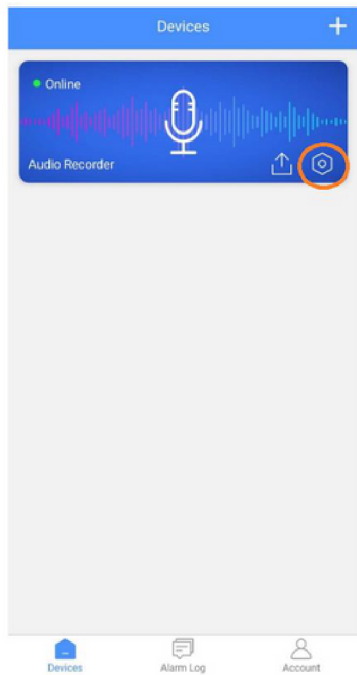
ONLINE MONITORING

For online streaming, click on the device list screen.

1. Battery status
2. Current audio track
3. Recording folder (micro SD card)

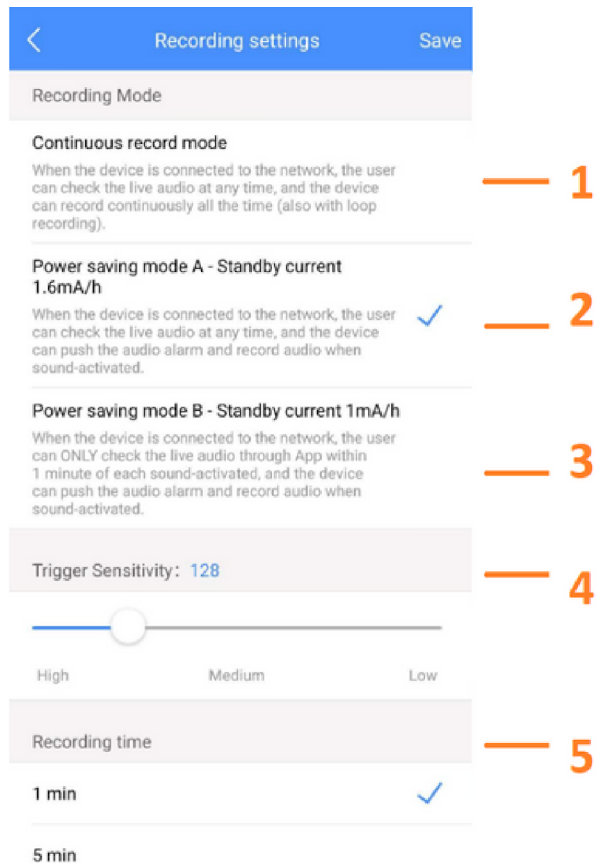


DETAILED SETTINGS



To change device settings, select the settings icon.

1. Device name
2. Local WiFi network connection settings
3. Recording settings
4. Notification activation/deactivation
5. Micro SD card (information, formatting)
6. Firmware version
7. Remove device



RECORDING SETTINGS

Continuous recording

Continuous recording mode. When the device is connected to the internet, the user can check the online listening at any time and the device can continuously record all the time (with loop recording).

Power-saving mode A - standby current 1.6 mA/h

When the device is connected to the internet, the user can check the online listening at any time. The device starts recording when noise is detected (sound detection).

Power-saving mode B - standby current 1mA/h

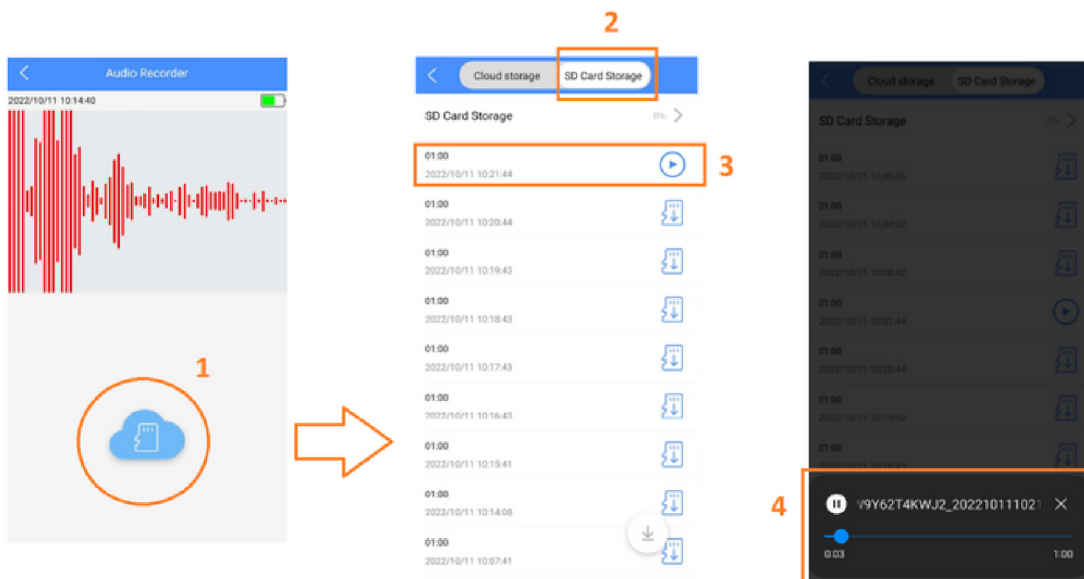
When the device is connected to the internet, the user can check the online listening ONLY within 1 minute of each noise activation. The device starts recording when noise is detected.

Sound detection sensitivity

5. Recording time

PLAYBACK OF RECORDINGS

- Open online listening
- Click on the cloud/micro SD card icon
- Select the micro SD card tab
- Download the recording and play it.



Note: Recordings can also be played directly on the PC from the micro SD card. To play, insert the micro SD card into the card reader on the PC.

PACKAGE CONTAINS

1. Wi-Fi Listening device
2. USB cable
3. Power adapter
4. 3M tape

FINAL NOTES

We would be pleased if you are interested in other products from our range. The device control may vary slightly depending on the individual series. Use the device in accordance with applicable laws and regulations. The supplier is not responsible for using the device in violation of these regulations.